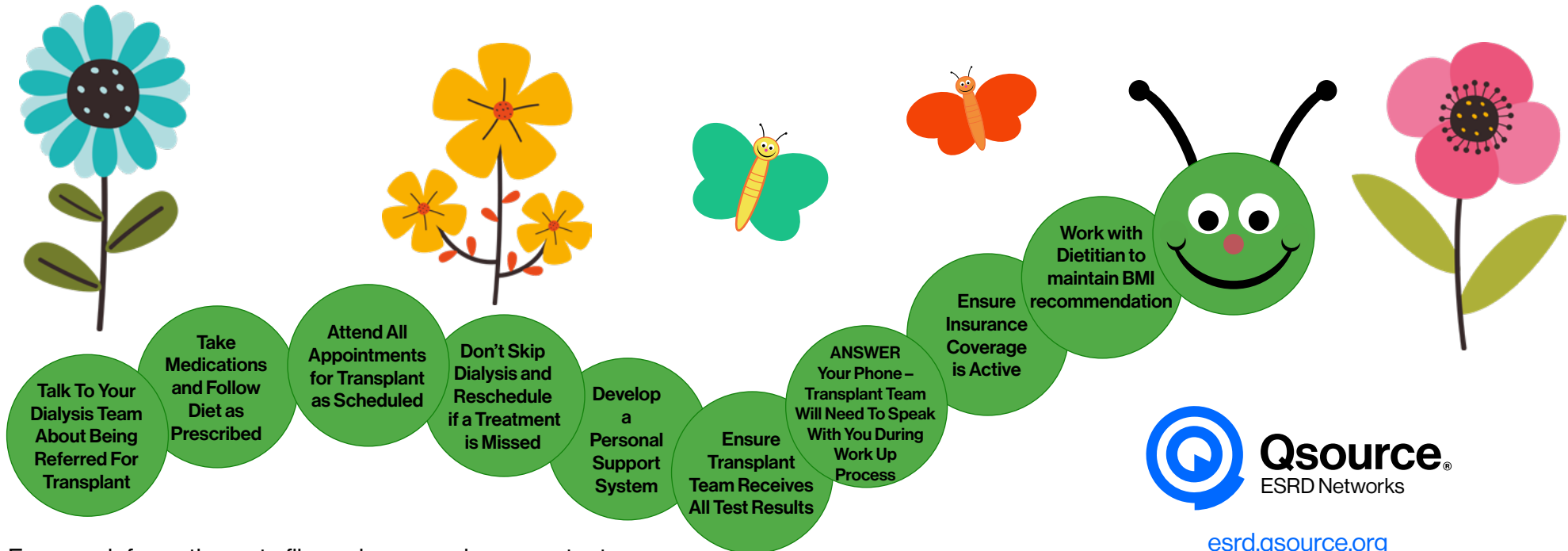
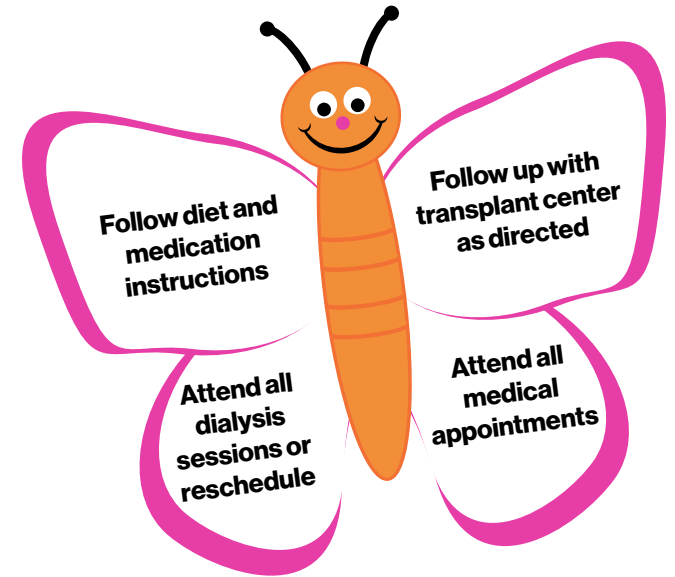


Bulletin Board Kit

Inching Your Way to Transplant

How to use your Bulletin Board Kit

1. Review the information included in this kit.
2. Print these pages and cut out the shapes.
3. Use the blank shapes to write down your own tips.
4. Use construction or craft paper to create the sky, grass, or dirt.
5. Ask one or more patients to help you create your bulletin board.
6. Put your bulletin board up in an area where everyone can see it.
7. Take a picture and send it to the Network at: Qsource-Peers@qsource.org.



esrd.qsource.org

For more information or to file a grievance, please contact:

ESRD Network 10 | 911 E. 86th St., Ste. 30 | Indianapolis, IN 46240 | Toll-Free: 800-456-6919

ESRD Network 12 | 2300 Main St., Ste. 900 | Kansas City, MO 64108 | Toll-Free: 800-444-9965

This material was prepared by Qsource, an End-Stage Renal Disease (ESRD) Network under contract with the Centers for Medicare & Medicaid Services (CMS), an agency of the U.S. Department of Health and Human Services (HHS). Views expressed in this material do not necessarily reflect the official views or policy of CMS or HHS, and any reference to a specific product or entity herein does not constitute endorsement of that product or entity by CMS or HHS. 25.ESRD.02.033

Cut out the title below or use poster letters to create the title on your bulletin board.

Inching Your Way

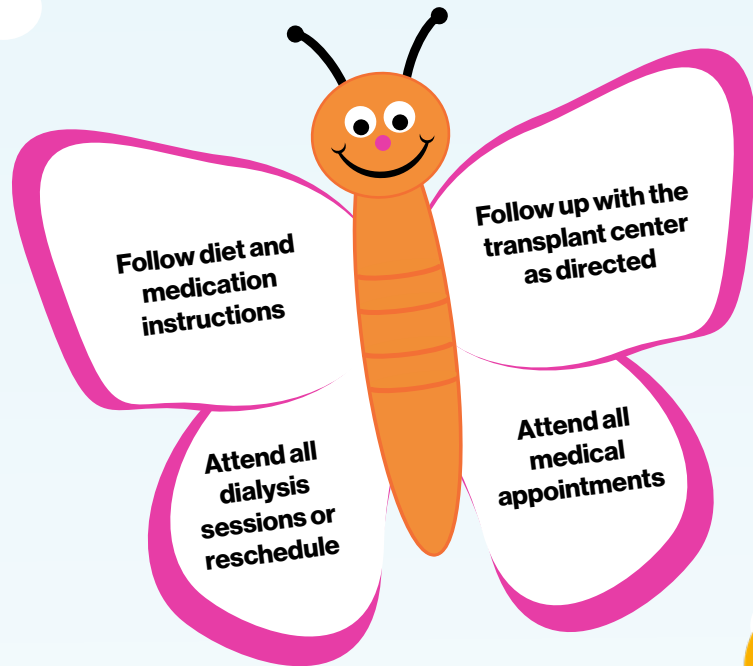
to Transplant

esrd.qsource.org

This material was prepared by Qsource, an End-Stage Renal Disease (ESRD) Network under contract with the Centers for Medicare & Medicaid Services (CMS), an agency of the U.S. Department of Health and Human Services (HHS). Views expressed in this material do not necessarily reflect the official views or policy of CMS or HHS, and any reference to a specific product or entity herein does not constitute endorsement of that product or entity by CMS or HHS. 25.ESRD.02.033



Inching Your Way to Transplant





**Talk To Your
Dialysis Team
About Being
Referred For
Transplant**

**Take Medications
and Follow Diet
as Prescribed**



**Attend All
Appointments
for Transplant
as Scheduled**

**Don't Skip
Dialysis and
Reschedule if
a Treatment
is Missed**

The image features two large, overlapping green circles on a white background. The left circle contains the text 'ANSWER Your Phone – Transplant Team Will Need To Speak With You During Work Up Process'. The right circle contains the text 'Ensure Insurance Coverage is Active'.


ANSWER
Your Phone –
Transplant Team
Will Need To Speak
With You During
Work Up Process

Ensure
Insurance
Coverage
is Active

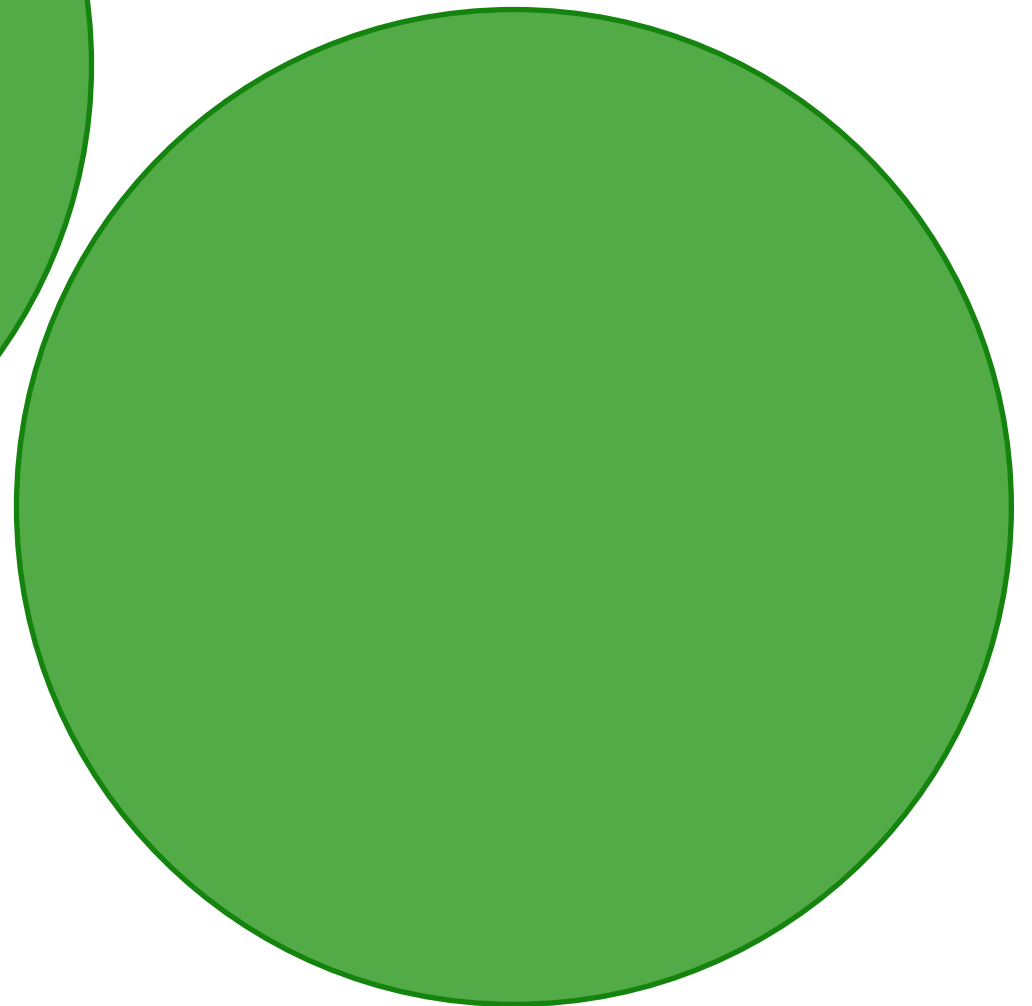
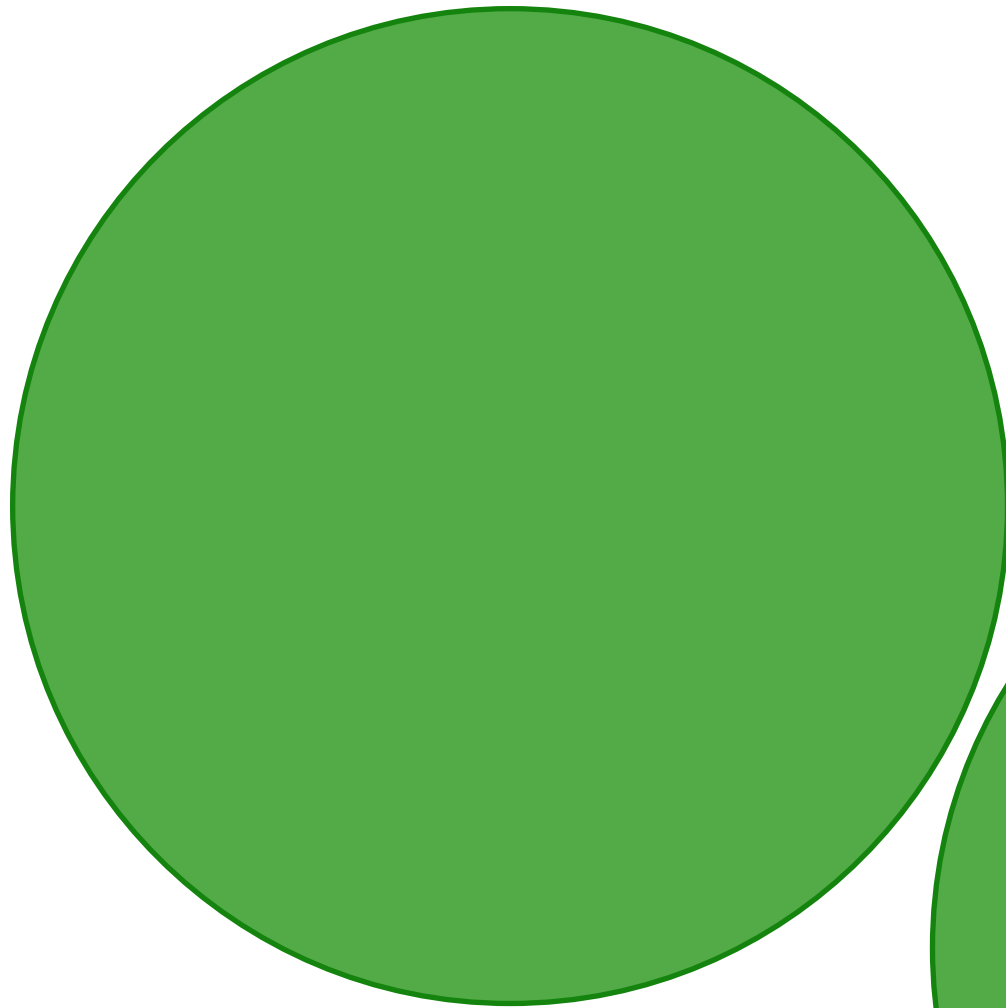


**Develop a
Personal
Support
System**

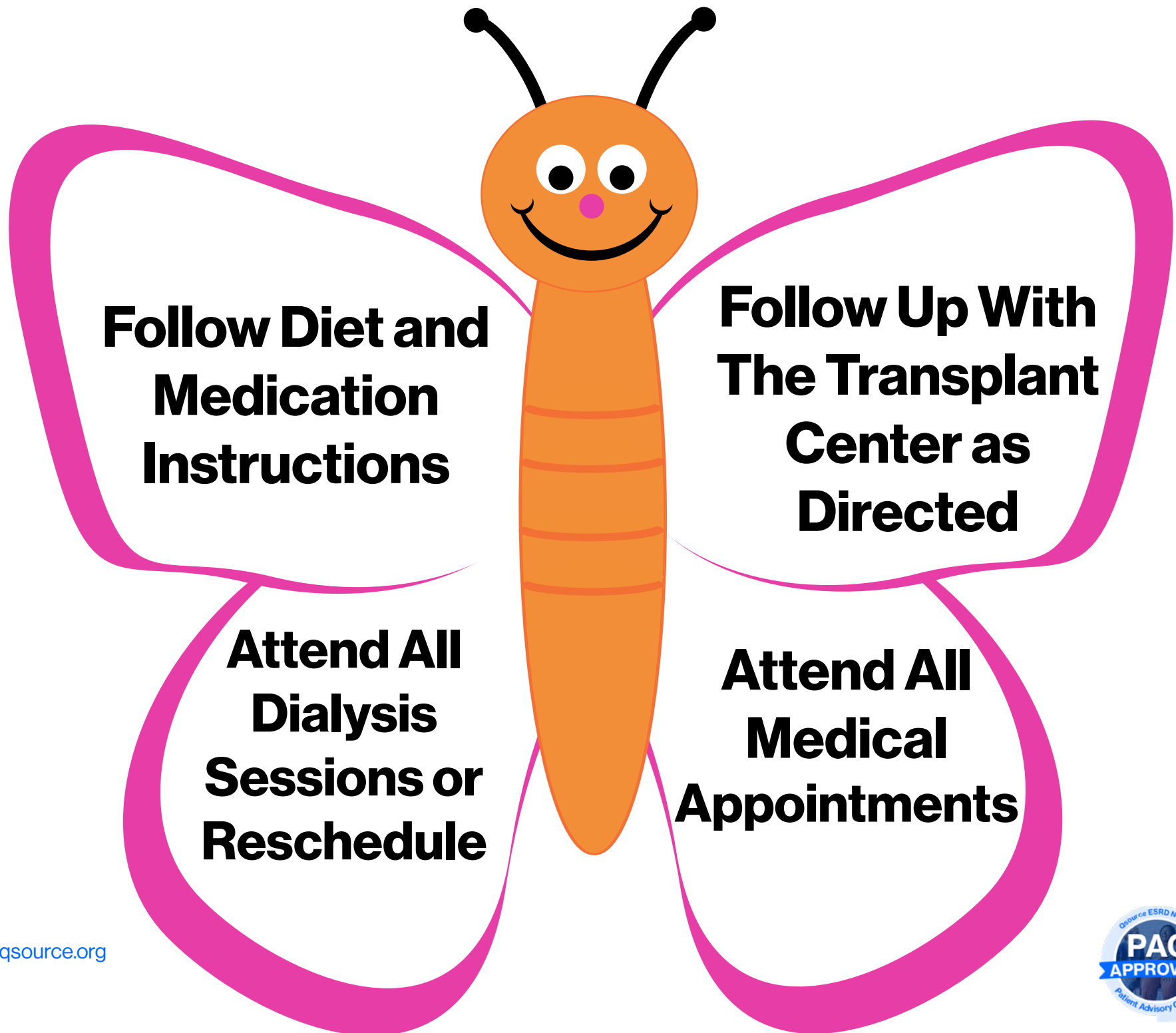
**Ensure
Transplant
Team Receives
All Test
Results**



**Work with
Dietitian to
maintain BMI
recommendation**







**Follow Diet and
Medication
Instructions**

**Follow Up With
The Transplant
Center as
Directed**

**Attend All
Dialysis
Sessions or
Reschedule**

**Attend All
Medical
Appointments**

